

Supplement for: Biomarkers and diatoms as tracers of past sea ice conditions and phytoplankton communities in the southwestern Ross Sea, Antarctica: drivers and variability over the last 200 years

5 Emma M. de Jong¹, Xavier Crosta², Sebastian Naeher^{3,a}, Bella Duncan^{1,4}, Johan Etourneau², Jae Il Lee⁵, Robert McKay¹, V. Holly L. Winton^{1*}

¹Antarctic Research Centre, Victoria University of Wellington, Wellington, 6021, New Zealand

²University of Bordeaux, CNRS, Bordeaux INP, UMR 5805 EPOC, Pessac, France

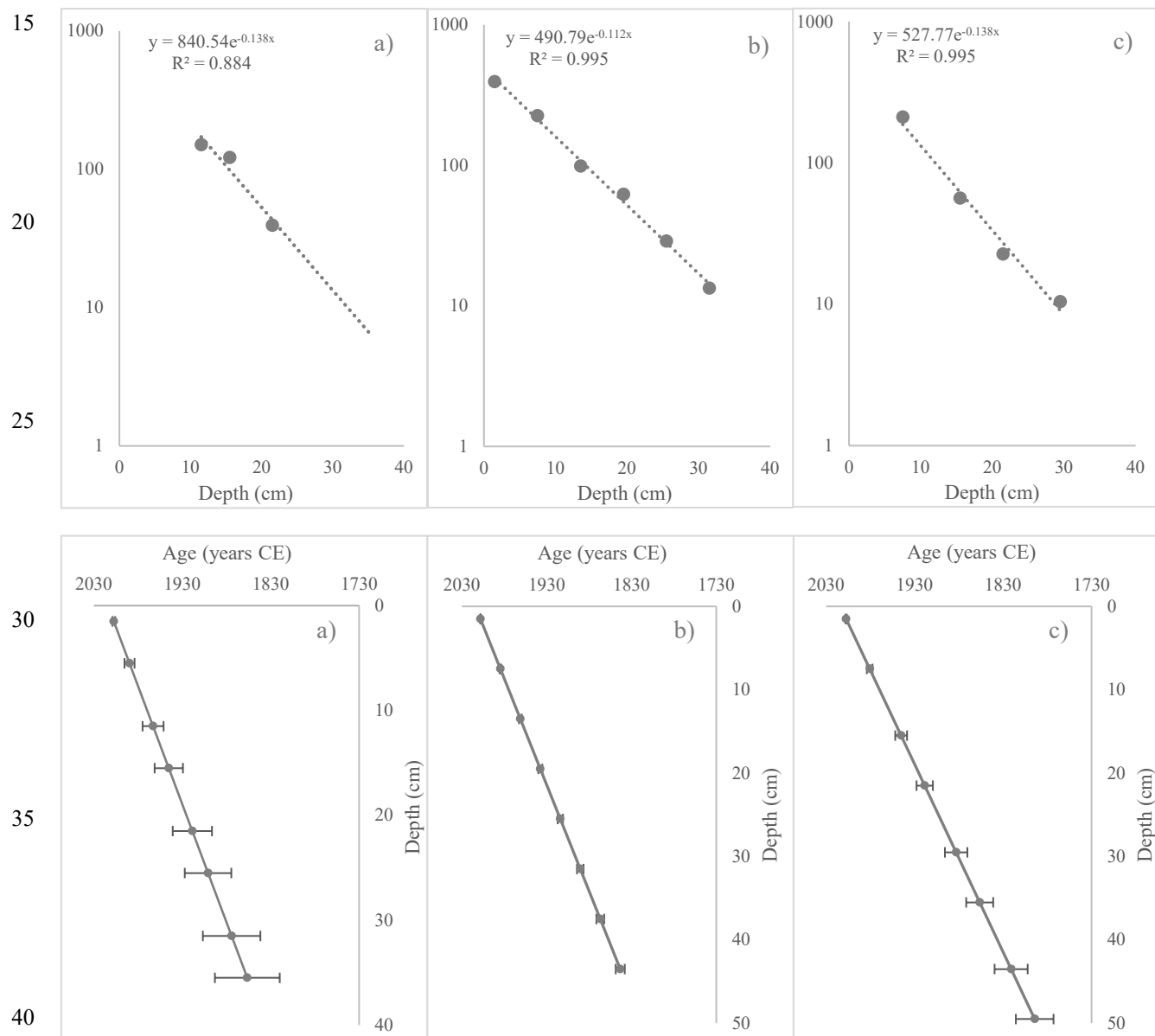
³School of Geography, Environment and Earth Sciences, Victoria University of Wellington, Wellington, 6021, New Zealand

⁴Earth Sciences New Zealand, Lower Hutt, 5010, New Zealand

10 ⁵Korea Polar Research Institute, Incheon 21990, Republic of Korea

^anow at: Department of Soil and Physical Sciences, Lincoln University, Lincoln, 7647, New Zealand

Correspondence to: V. Holly L. Winton (holly.winton@vuw.ac.nz)



Supplementary Figure 1: Lead dating age-depth models for a) BC02, b) BC03, c) BC04, and d) BC04 with Radiocarbon age. Top: Sedimentation rates were calculated from the least-squares fit slope of $^{210}\text{Po}_{\text{Supported}}$ on a logarithmic scale against depth (Appleby, 2001). Bottom: The constant flux and constant sedimentation rate (CFCS) model was applied to determine sediment ages. Errors were estimated using R package ‘serac’ (Bruehl et al., 2020).